

Rego

B&T



Rego

Chair - Lounge

Indoor

Rego

Meet Rego, which perfectly adapts to different spaces with its simple, flexible and customizable design and its refined workmanship featuring quality and comfort!

Rego



Chair - Lounge

Indoor



With its twisted structure, Rego firmly holds the user and places comfort in the focus of experience with its extended seat. While its twisted ends create special areas of privacy, it has a smooth intersection with its soft twists joining the chair and the back.

Designer

B&T Design Studio - Chair 2014

B&T Design Studio - Lounge 2021



Rego

Chair - Lounge

Indoor



Rego

Chair Lounge

Indoor

Product Details



Rego Lounge, with its two different models of low and high backs and its rotatable wooden or metal legs, it enables creative updates and adds a dynamic new expression to the design thanks to allowing for the applicability of all colours in the chart as well as for matching two different materials, leather and fabric, or colours on its internal and external surface.



The pouffes for stretching out legs, which are compatible with the options of Rego Lounge wooden and metal legs, accompany the design by aiming at maximizing comfort and ease.



Rego

Chair - Lounge

Indoor

Finish Options

A rich range of material choices is provided for Rego series to create the best match within interior style.

Wood Leg Finishes



White
RAL 110-1
(Ash)



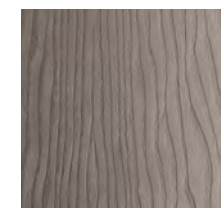
Natural
(Ash)



Silk Grey
RAL 7044
(Ash)



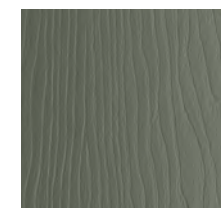
Taupe
G 876
(Ash)



Smoke
Grey
(Oak)



Cement
Grey
RAL 7033



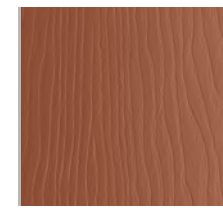
Green Grey
RAL 7009
(Ash)



Nordic
Lichen
(Ash)



Beige Red
RAL 3012
(Ash)



Terracotta
RAL 8004
(Ash)



Precious
Sand
(Ash)



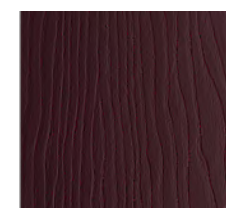
Light Brown
(Oak)



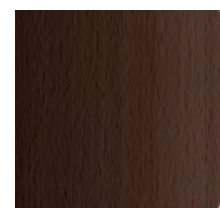
Pale Brown
RAL 8025
(Ash)



Dark Brown
(Oak)



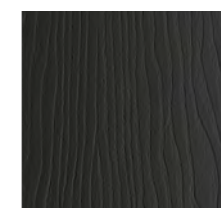
Black Red
RAL 3007
(Ash)



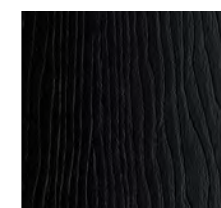
Walnut
(Beech)



Grey
G 458
(Ash)



Anthracite
RAL 7016
(Ash)



Black
RAL 9005
(Ash)

Upholstery

Fabric, Leather, Artificial Leather.
COM and COL options are also available

Chair

textile fabric yardage (mt)	1,3
real leather square meter (m ²)	2,1

Lounge

textile fabric yardage (mt)	Classic	1,7
	Exclusive	2,2
real leather square meter (m ²)	Pouf	0,7
	Classic	2,55
	Exclusive	3,3
	Pouf	1,1

Metal Leg Finishes



White
RAL 9016



Silk Grey
RAL 7044



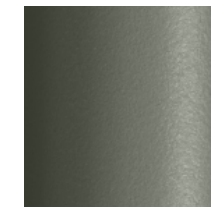
Precious
Sand



Taupe
G 876



Nordic
Lichen



Green Grey
RAL 7009



Cement Grey
RAL 7033



Beige Red
RAL 3012



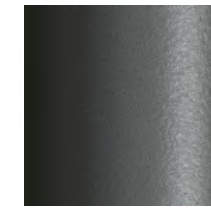
Terracotta
RAL 8004



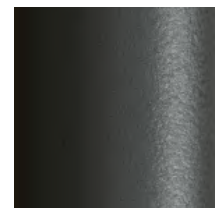
Pale Brown
RAL 8025



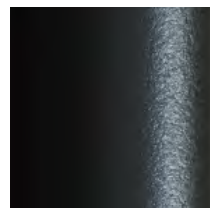
Black Red
RAL 3007



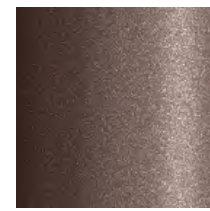
Grey
G 458



Anthracite
RAL 7016



Black
RAL 9005



Bronze



Gold

Aluminium Leg Finishes (Only for premium)



Polished
Aluminium



White
RAL 9016



Silk Grey
RAL 7044



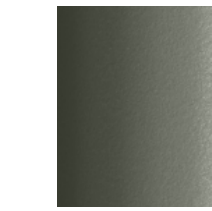
Precious
Sand



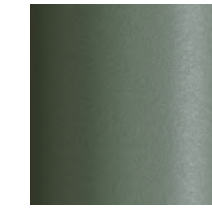
Taupe
G 876



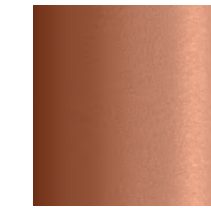
Nordic
Lichen



Green Grey
RAL 7009



Cement Grey
RAL 7033



Beige Red
RAL 3012



Terracotta
RAL 8004



Pale Brown
RAL 8025



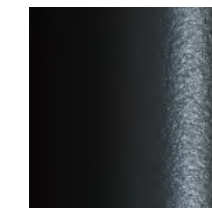
Black Red
RAL 3007



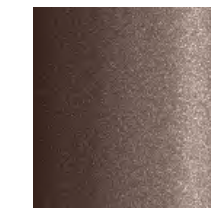
Grey
G 458



Anthracite
RAL 7016



Black
RAL 9005



Bronze



Gold

More options are downloadable in the catalogues

MATERIAL CATALOGUE 

FABRIC & LEATHER CATALOGUE 



Rego

Chair - Lounge

Indoor

Models of Product

Chair

X



Sled



Ellipse
Swivel



Wood Dowel



Plywood



Models of Product

Office 4-Prong
Swivel



Office 5-Prong
Swivel/Gas-Lift



Premium
Swivel



Office Premium
Swivel/Gas-Lift



Models of Product

Lounge

Premium
Swivel Classic



Premium
Swivel Exclusive



Wood
Swivel Classic



Wood
Swivel Exclusive



Pouf
Swivel



Rego

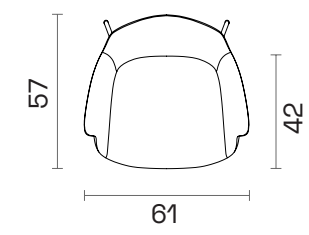
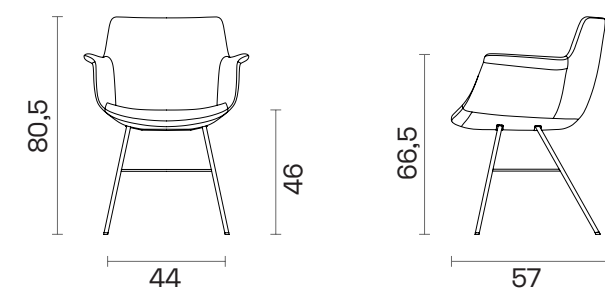
Chair - Lounge

Indoor

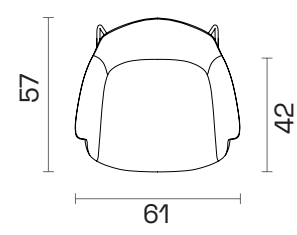
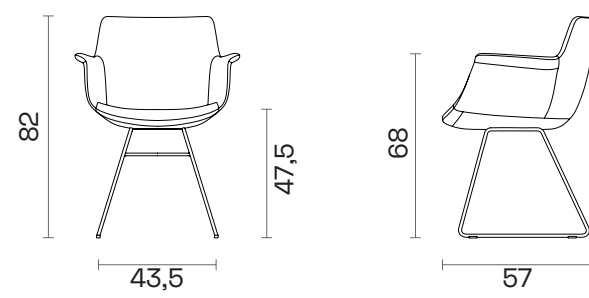
Dimensions (cm)

Chair

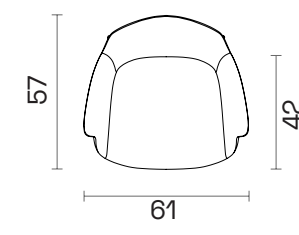
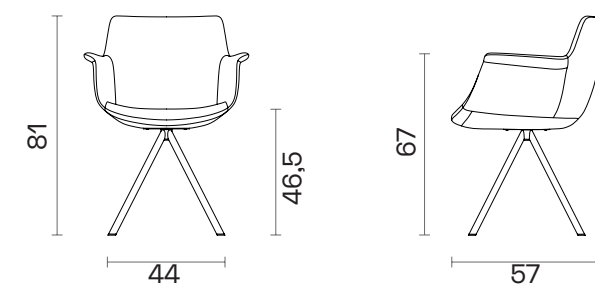
X



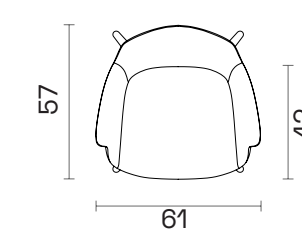
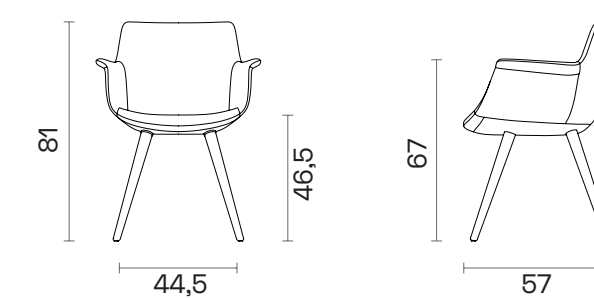
Sled



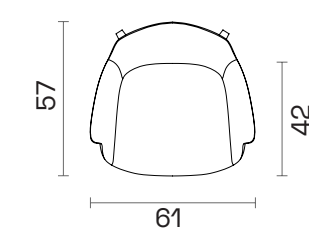
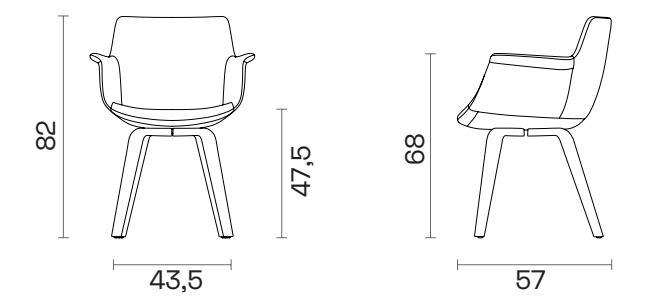
Ellipse Swivel



Wood Dowel

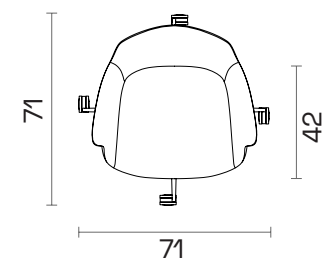
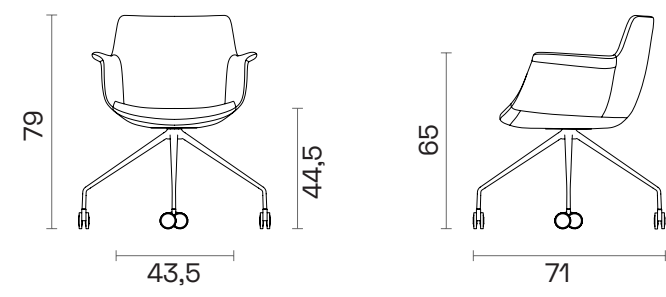


Plywood

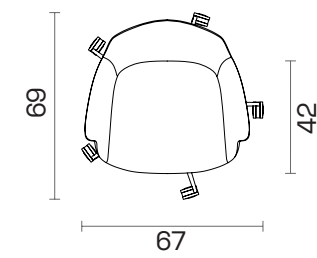
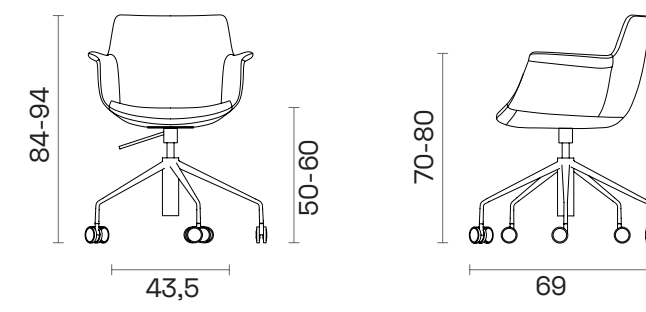


Dimensions (cm)

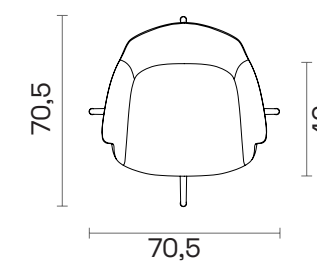
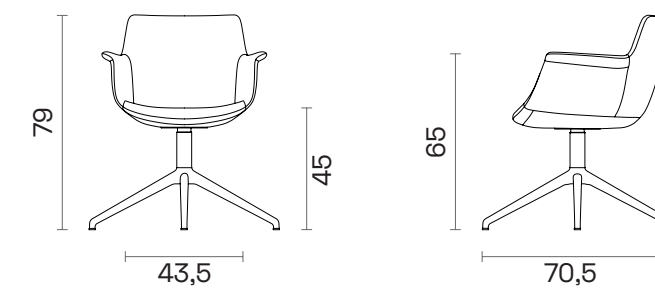
Office 4-Prong
Swivel



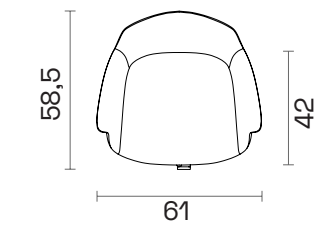
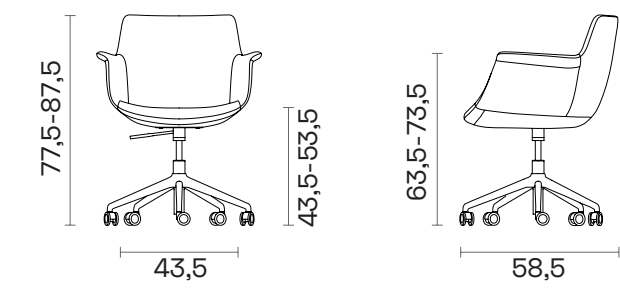
Office 5-Prong
Swivel/Gas-Lift



Premium
Swivel



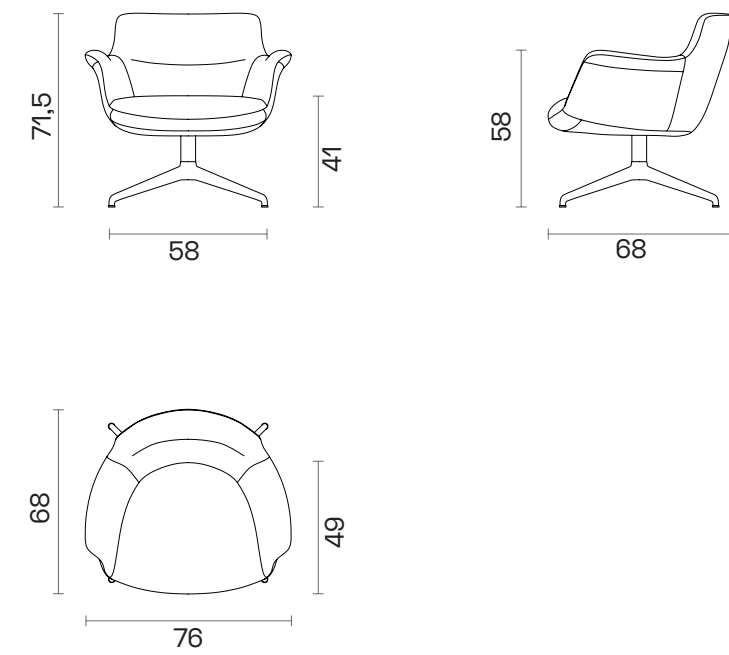
Office Premium
Swivel/Gas-Lift



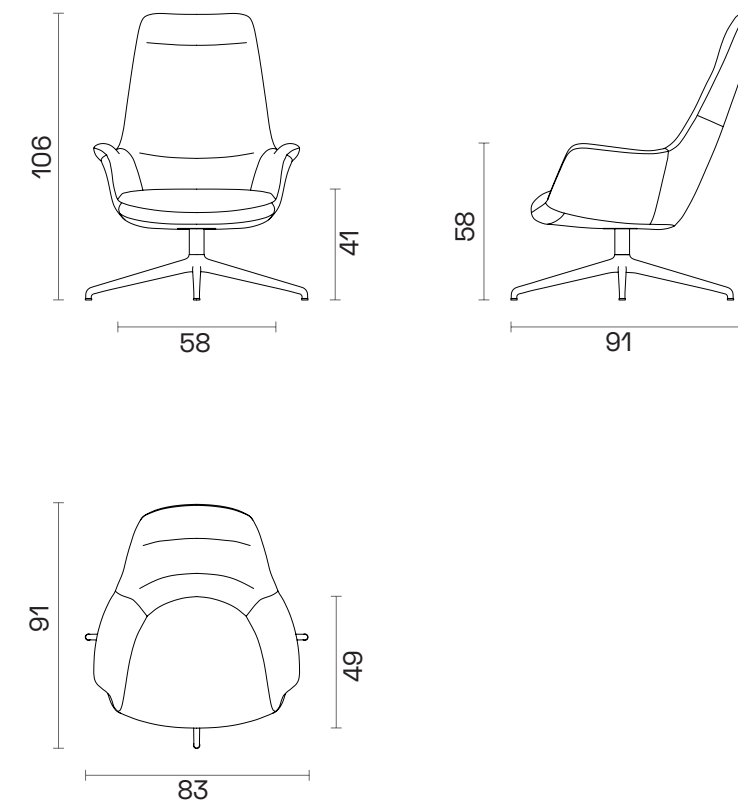
Dimensions (cm)

Lounge

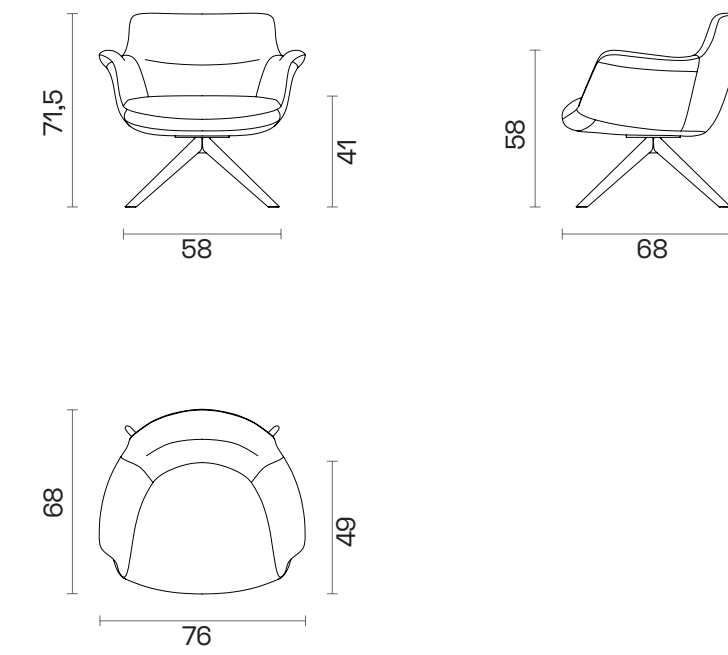
Premium
Swivel Classic



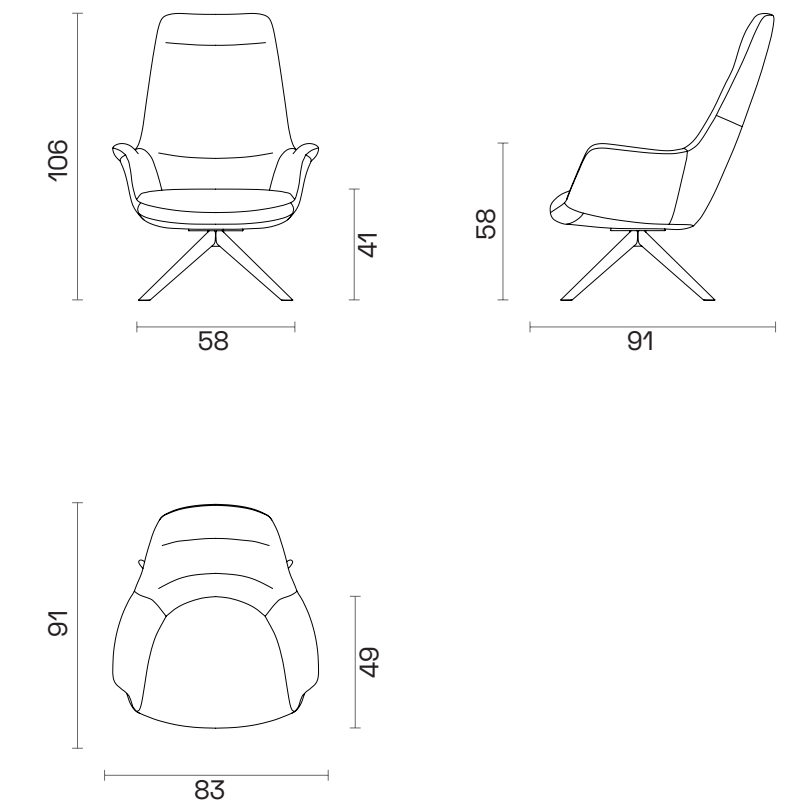
Premium
Swivel Exclusive



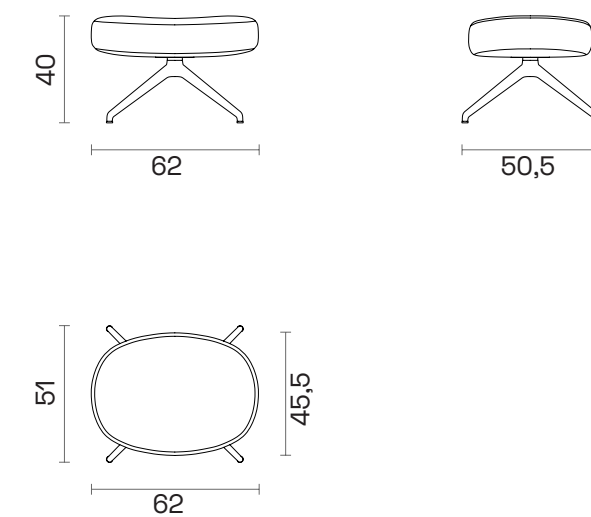
Wood
Swivel Classic



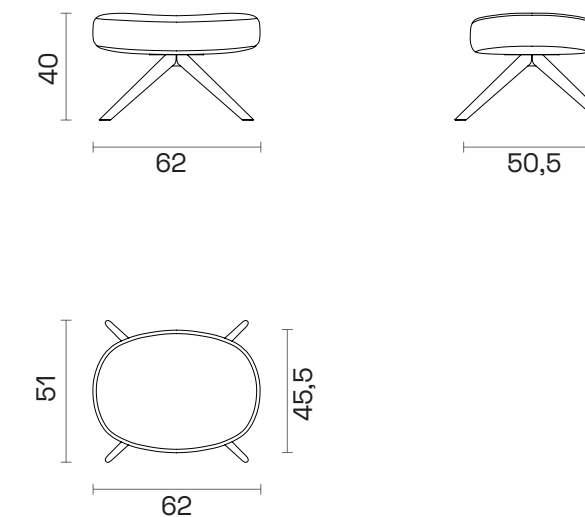
Wood
Swivel Exclusive



Pouf
Metal Swivel



Pouf
Wood Swivel



Downloads

2D & 3D FILES



PRODUCT IMAGES



CERTIFICATES



You can run this product
with following system:

pCon
PLANNER



Rego

Chair - Lounge

Indoor



Rego

Chair - Lounge

Indoor

Technical Specifications			Chairs		
	Package Dimensions (cm) Quantity in Box: 1	Volume (m³)	Weight (kg)	Base	Seat / Back
X	62x58x84	0,31	9,5	Ø16mm Metal Profile + Electrostatic Powder Coated	Metal Structure + Polyurethane
Sled	62x58x84	0,31	9,5	Ø12mm Metal Rod + Electrostatic Powder Coated	
Ellipse S	62x58x84	0,31	10,5	14x28mm Oval Profile + Electrostatic Powder Coated	
Wood Dowel	62x58x84	0,31	9,5	Solid Ashwood / Solid Beechwood	
Plywood	62x58x84	0,31	9,5	Plywood	
Office 4-Prong S	69x63x84	0,32	10,5	Metal Profile + Electrostatic Powder Coated	
Office 5-Prong SGL	70x70x105	0,51	12	Metal Profile + Electrostatic Powder Coated	
Premium S	69x63x84	0,37	13	Aluminium Injection	
Premium S-GL	69x63x84	0,32	12	Aluminium Injection	

Technical Specifications		Lounge			
	Package Dimensions (cm) Quantity in Box: 1	Volume (m³)	Weight (kg)	Base	Seat / Back
Premium S Classic	75x80x80	0,48	14,2	Aluminium Injection	Metal Structure + Polyurethane
Premium S Exclusive	85x75x120	0,77	18	Aluminium Injection	
Wood S Classic	75x80x80	0,48	14	Solid Ashwood / Solid Beechwood	
Wood S Exclusive	85x75x120	0,77	17	Solid Ashwood / Solid Beechwood	
Pouf Premium S	62x58x59	0,21	6	Metal	
Pouf Wood S	62x58x59	0,21	5,5	Wood	

CARE AND MAINTENANCE 

Care and maintenance instructions & warranty certificate **click and download**



www.bt.design

Showroom

Istanbul
istanbul@bt.design

Ankara
ankara@bt.design

London
london@bt.design

Factory

Istanbul
fabrika@bt.design

Bulgaria
europa@bt.design

Export

export@bt.design